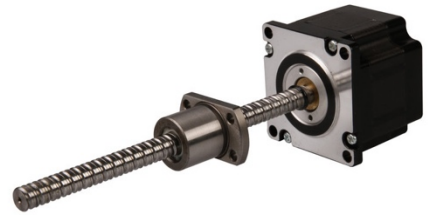


## HYBRID STEPPER MOTOR BALL SCREW ACTUATOR



- **Motor characteristics**

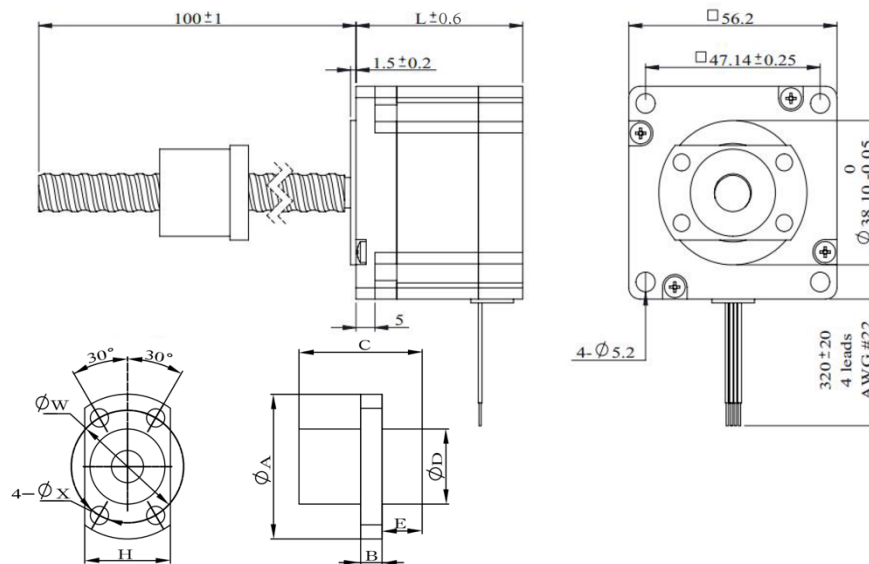
Motor	Voltage (v)	Current (A)	Resistance (Ω)	Inductance (mH)	Lead wire no.	Motor length (mm)
ACT2345-20-B100	3,5	2,0	1,75	4,1	4	45
ACT2345-30-B100	2,4	3,0	0,8	1,7	4	45
ACT2365-25-B100	5,0	2,5	2,0	5,2	4	65
ACT2365-40-B100	2,8	4,0	0,7	2,0	4	65

- **Ball Screw Specifications**

Ball Screw Type	1002	1004	1005	1010	1015	1020	1202	1210
Ball Size	∅1,5875	∅2,0	∅2,0	∅2,0	∅2,0	∅1,5875	∅1,5875	∅2,381
Number of Thread	1	1	1	2	2	4	1	2
Thread Direction	Right							
Shaft Root Diameter	∅8,6	∅8,2	∅8,2	∅8,4	∅8,4	∅8,7	∅10,6	∅10,2
Number of Circuit	3,7x1	2,7x1	2,7x1	1,6x1	1,6x2	0,7x2	3,7x1	1,7x2
Shaft, Nut Material	SCM415H							
Surface Hardness	HRC58-62							
Anti-Rust Treatment	Anti-rust Oil							
Grade	C7							

Nut Size	A	B	C	D	H	W	X	E	Position Accuracy	Total Run Out	Axial Play	Dynamic Load (N)	Static Load (N)
1002	40	5	28	23	25	32	4,5		±0,05	0,12	0,02	2700	5300
1004	41	5	28	24	26	33	4,5		±0,05	0,12	0,02	3000	5200
1005	40	5	26	23	25	32	4,5		±0,05	0,12	0,02	3000	5200
1010	40	5	24	23	25	32	4,5		±0,05	0,12	0,02	3300	5900
1015	40	5	33	23	25	32	4,5	6	±0,05	0,12	0,02	3300	6400
1020	37	5	23	20	22	29	4,5	5	±0,05	0,12	0,02	2100	4000
1202	42	5	30	24	26	33	4,5		±0,05	0,12	0,02	3000	6400
1210	41	5	30	24	26	33	4,5	9,5	±0,05	0,12	0,02	5100	9800

- Dimensional Drawings



- Speed Thrust Curves

