

## HYBRID STEPPER MOTOR BALL SCREW ACTUATOR



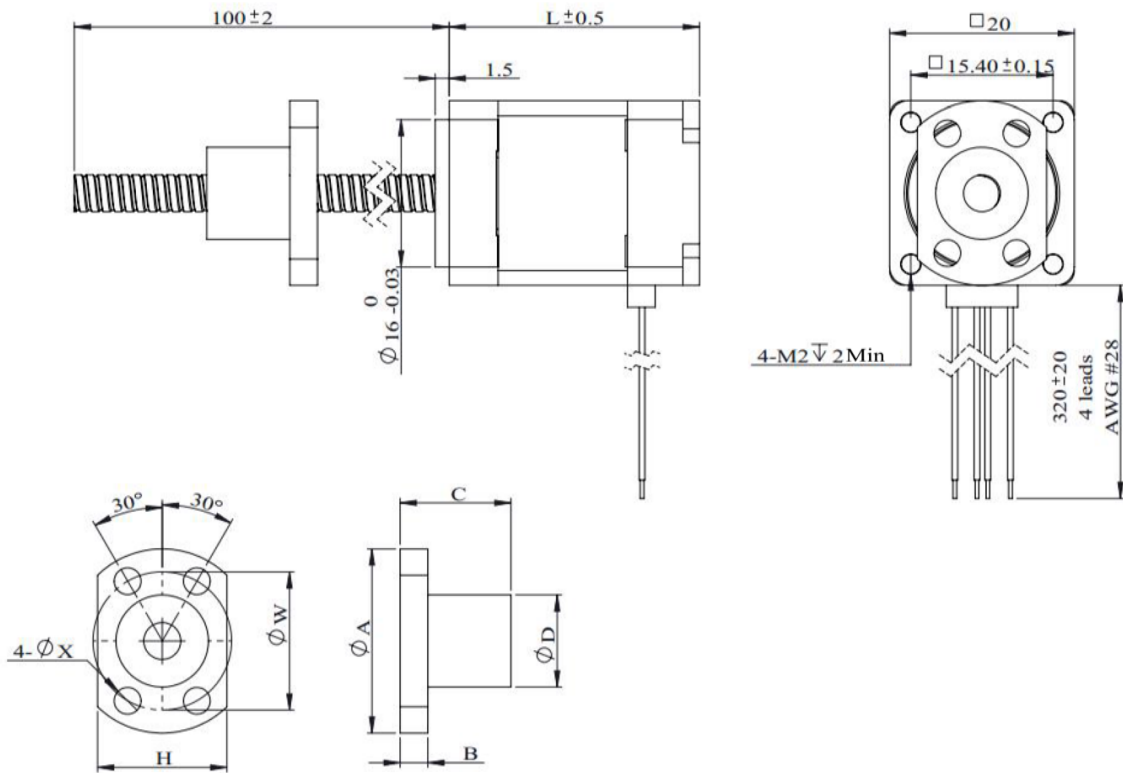
- **Motor characteristics**

Motor	Voltage (v)	Current (A)	Resistance (Ω)	Inductance (mH)	Lead wire no.	Motor length (mm)
ACT0820-04-B100	3,5	0,4	8,8	2,8	4	20
ACT0827-05-B100	2,55	0,5	5,1	1,5	4	27,2
ACT0838-05-B100	4,4	0,5	8,8	2,7	4	38,1

- **Ball Screw Specifications**

Ball Screw Type		0401							0402					
Ball Size		∅0,8							∅0,8					
Number of Thread		1							1					
Thread Direction		Right												
Shaft Root Diameter		∅3,3							∅3,3					
Number of Circuit		3,7x1							2,7x1					
Shaft, Nut Material		SCM415H												
Surface Hardness		HRC58-62												
Anti-Rust Treatment		Anti-rust Oil												
Nut Size	A	B	C	D	H	W	X	Grade	Position Accuracy	Total Run Out	Axial Play	Dynamic Load (N)	Static Load (N)	
0401	23	4	17	11	15	17	3,4	C7	±0,05	0,12	0,02	560	790	
0402	23	4	19	11	15	17	3,4	C7	±0,05	0,12	0,02	420	570	

- Dimensional Drawings**



- Speed Thrust Curves**

